



Long Island Woodturner's Association
Newsletter

April 2024

Cooking Utensils

Presented By: Todd Raines



LIWA is a chapter of the American Association of Woodturners. Our purpose is to foster a wider interest and appreciation of woodturning on Long Island and in the Metropolitan area.



TABLE OF CONTENTS

CRYSTAL BALL: UPCOMING MEETING SCHEDULE FOR 2024.3

CLUB OFFICERS FOR 2024.....4

SUMMARY OF MEETING.....5

TREASURER’S REPORT:6

3RD ANNUAL STORCH WORKSHOP:.....6

EL PRESIDENTE9

SHOW AND TELL: 10

EYE ON: BARRY SALTSBERG 14

MAIN EVENT 15



Crystal Ball: Upcoming Meeting Schedule for 2024.

All meetings run from 9:00 am to 12:00 noon on the 3rd Sat of the month. Dates subject to change. Doors open at 8:00 am for socializing and setup. Live meetings are held at Northport High School (154 Laurel Hill Road, Northport, NY 11768) and are also available via Zoom. Links will be sent to all members in good standing.

May 18 – Bob Lindstadt – TBD

June 15 – Bob Lee – CAD design tools

July 20 – Picnic at Bob Urso

August 24 – (fourth Saturday) Picnic at Steve Fulgoni

September 7 and 8 – Long Island Woodworkers Show – We will be doing turning demonstrations.

September 21 – TBA

October 19 – TBA

November 16 – Richard Finley – TBA

December 21 – TBA



Club Officers for 2024

Officers:

President:	Bob Lee	(516) 232-3910	rlee@liwoodturners.org
Vice President:	Paul Permakoff	(631) 261-7207	classakid@aol.com
Secretary:	Barry Dutchen	(516) 443 5342	bdutchen@gmail.com
Treasurer:	Mike Josiah	(631) 758-3309	mjosiah07@gmail.com
Chair of the Board:	Ken Deaner	(917) 318-2982	ggoosie@aol.com

Board Members at Large:

Mitch Friedman	Mgfassoc@gmail.com
Jodi Gingold	jgingold1@gmail.com
Les Hoffman	hoffmanclaims@verizon.net
John Kowalchuk	howzbyu@optonline.net
Jim Moloney	jpatmo@aol.com
Pete Richichi	turner1938@verizon.net
Barry Saltsberg	woodartist@optonline.net

Committees:

Finance/Membership:

Mike Josiah

Mentoring:

Jodi Gingold

Newsletter:

Barry Dutchen

Webmasters:

Bob Lee

Jim Moloney

Audiovisual/Zoom:

Jim Moloney

Bob Lee

Events Scheduling:

Paul Permakoff

Refreshments:

Ray Bohn (amb1227@aol.com)

To all members: If not you, who? Please consider joining a committee and helping your fellow woodturners and yourself.



Summary of Meeting

Bob began by talking about the very successful Bob Storch Student-Parent Workshop held April 13. It was attended by 16 students and parents actively engaged in learning how to use the lathe. See below for more information.

Bob then discussed the display cabinet provided at the Old Bethpage Village Restoration. We have 4 shelves that our members can showcase the club and your own work. The top two shelves are pieces by Tony Fuoco and bottom two shelves by Joe Dour. The cabinet can be filled by one person or any combination of up to four people with a shelf each. Contact any club officer for more details.





Treasurer's Report:

We are currently at 74 members with 21 not paid.

3rd Annual Storch Workshop:

Hello LIWA members,

Saturday April 13th we had our third annual Storch Beginners Turning Workshop with students and parents from Northport High School. This is our opportunity to both foster a wider interest and appreciation of the art of woodturning and give back to the school with the opportunity for people to experience turning firsthand. I would like to thank all the volunteers who participated in making the event a success. Bob

Here is a copy of the press release from Northport High School:

Good evening,

Here's a press release and video link to the successful 3rd Annual LIWA Beginners Workshop!

Northport, NY, April 13, 2024 – The **Long Island Woodturners Association (LIWA)** facilitated their 3rd Annual *Bob Storch Memorial Beginners Workshop* on Saturday morning with master turners working with Northport High School students and parents to cultivate the art of woodturning. Participants thoroughly enjoyed the unique opportunity to work hands-on with a lathe, honing their skills and crafting their own exquisite oak, maple, cherry, and ash bowls as well as learning to make acrylic and wood-encased pens. The workshop serves as a platform for beginners to learn and grow alongside seasoned professionals seeking to foster a vibrant community of woodturning enthusiasts. By engaging with the intricate techniques and timeless traditions of woodturning, attendees not only develop craftsmanship but also forge lasting connections within the woodworking community on Long Island. LIWA remains committed to preserving and promoting the rich heritage of woodturning and the *Bob Storch Memorial Beginners Workshop* stands as a tribute to this enduring craft. Ed Moloney, Technology & Engineering teacher at Northport High School, organized the workshop in concert with the Executive LIWA Board members, Bob Lee, Jim Moloney, and Barry Saltsberg.

Here's a brief video of the workshop: [3rd Annual LIWA Beginners Workshop](#)

Through hands-on workshops, collaborative projects, and community engagement, LIWA provides a supportive and engaging environment where beginners and seasoned artisans alike explore the art of turning. By preserving traditional techniques, LIWA seeks to inspire creativity, craftsmanship, and camaraderie among woodturning enthusiasts, ensuring that this cherished art form continues to thrive for generations to come.

Best regards,

David



Here's a link to the video:

<https://www.youtube.com/watch?v=Lld88qwnq04>







El Presidente - A Message from our President

In April we had two events. First, the third annual Storch workshop was a success with both students, parents and woodturners having interactions and making some interesting pieces. This was my first time participating but I found it rewarding. I encourage others to support future workshops. I brought my lathe and found the headstock bolts loose which was a bonus and a reminder to check periodically.



The second was our regular monthly meeting which had an interesting combination of sanding and grinding techniques after the initial turning to achieve a cooking utensil. In May we are back to having a presenter from our group and I am excited that a relatively new turner will be sharing some of his techniques with us.

Two members also filled our group cabinet at Old Bethpage Village Restoration across from the ticket area for April and May. Additional volunteers are needed for June and July as well as the rest of 2024.

Keep turning!

Bob

~~~



Show and Tell:















## Eye On: Barry Saltsberg

*From the Editor: I thought it would be nice if we learned a little bit about our members, beyond the short conversations we have at the monthly meetings. To further this, I want to encourage everyone to consider submitting, what is often termed “an elevator conversation”. That is, what would you say if you had 60 seconds to tell someone your personal history (family, career, and of course, how you became interested in woodturning). I realize some of you might be uncomfortable talking about yourselves, while others might find doing it in under 60 seconds extremely challenging. If you would like to participate and need help (either way), please reach out to me via email, phone or at a meeting. Thanks, Barry D*

This month, Barry Saltsberg has volunteered to share his story. **Here is his story:**

I'm the immediate past president of LIWA (there are a lot of us past presidents around). I started woodworking at age 12, when I joined the Boy Scouts. Part of the uniform was a neckerchief, and it was worn with a slide. Most of the kids used the standard cast metal slide. Boys Life Magazine published a "slide of the month," which was a carving project, and I usually carved them, using my Boy Scout's knife. Looking back, I am amazed that I could do it using that crude instrument. Years later, as a member of the carving SIG, I tried to duplicate one of the slides using the sophisticated tools I now have, and the one I carved as a kid was better!

Since that time, I've always made the things I needed or designed in my head. It was a situation where I didn't know I couldn't do it, so I just went ahead and did it.

I ran track in high school and as an adult, I was a runner (7 marathons) and a cyclist (many centuries and one double century).

Professionally, I'm an architect, having graduated from Pratt Institute in Brooklyn, and passed the exam to become registered. I worked for the US Army Corps of Engineers for 35 years, in the North Atlantic Division. Our territory covered the North-Eastern United States and Europe, and I was fortunate enough to travel to Germany, Italy and Belgium on business. When time permitted, I did some sightseeing while I was there.

I've got two ex-wives and one son from the first one. When he was a kid, he was into several sports, so I found myself coaching soccer, little league baseball and basketball. At some point, I became a school track and field official and a soccer referee for junior league soccer and school soccer.

Somewhere along the line, I went to a woodworking show at Sports Plus put on by the L.I. Woodworkers Club, which I joined shortly thereafter. That's where I was introduced to wood turning and joined the woodturning SIG. Bob Urso invited the SIG members to the July meeting of LIWA, which I joined shortly thereafter. And the rest, as they say, is history.





## Main Event

Featured Speaker:

**Tod Raines**

### **Cooking Utensils**

To see the presentation from start to finish, use this link:

<https://vimeo.com/937753667/218a2ad38a>

Tod recorded the meeting and split the recording into 2 parts. The demo portion will be available to us on Tod's Vimeo account for 3 months. The link to the video (above) and also includes a description of the steps. He sent us a video of the first part of the meeting including show & tell so we can have it permanently. This is the link to the show & tell video: <https://www.youtube.com/watch?v=fW86pbfTgwI>

On the next page is a pdf template for the utensils, note that it should be printed at 200% for full size drawings.

Tod also gave us a coupon code. Use coupon code "LIW24" for 10% off site wide at <https://woodturningtoolstore.com/>. The coupon is valid until April 30th.

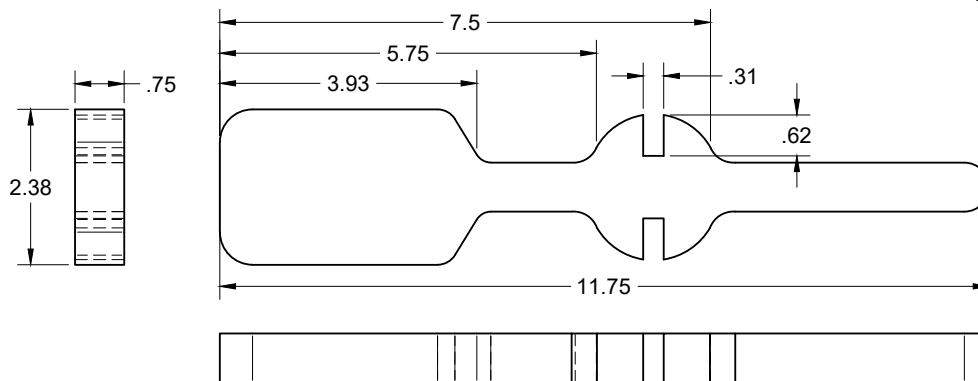
Passwords available to paid members as a link from Jim M

### **“Fantastic Kitchen Utensils – Spatula and Spoon”**

#### Demo Notes

This demonstration will show how to make a spatula and spoon. However, not just an ordinary spatula or spoon but these kitchen utensils add a fantastic feature that lets them reside on the side of a pot or pan waiting for you to use. No more dripping sauce on your cooktop or counter - keep the sauce in the pot or pan! The other feature of the spatula is the curved, slanted, and thin edge. This creates a natural position for your hand to move the food around any pot or pan.

I will show you the drawing of this design and then talk about wood selection. We will look at rough cutting the blank on the bandsaw and then mark out the blank for mounting on the lathe. There will be a need to put in some layout lines to guide where to turn. I will go through the turning of two utensils with slightly different shapes. The crucial feature will be turned and then it will need to be tuned up by hand off the lathe. I will show the profile cutting of the spatula and spoon on the bandsaw. The final step is to sand each to the final profile. I will show the setup of a drum sander on the lathe. The spoon interior will need to be carved and sanded out. We can talk about finish options, and I will share my thoughts on how to finish these useful items.



|                                                                           |            |            |                 |        |           |
|---------------------------------------------------------------------------|------------|------------|-----------------|--------|-----------|
| Woodturning Tool Store<br><br>Contact Tod Raines for info<br>214-924-3748 |            |            | PROJECT         |        |           |
|                                                                           |            |            | Turning Designs |        |           |
|                                                                           |            |            | TITLE           |        |           |
|                                                                           |            |            | spatula         |        |           |
| APPROVED                                                                  | SIZE       | CODE       | DWG NO          | REV    |           |
| CHECKED                                                                   | A          |            |                 |        |           |
| DRAWN                                                                     | Tod Raines | 11/24/2020 | SCALE 1:2       | WEIGHT | SHEET 1/2 |