



Long Island Woodturner's Association Newsletter

September Issue

Sept 18, 2021

Featured Speaker: Mike Josiah

Using Resin in Turning



LIWA is a chapter of the American Association of Woodturners. Our purpose is to foster a wider interest and appreciation of woodturning on Long Island and in the Metropolitan area. We generally meet on the third Saturday of each month from 8:30 AM until Noon at the Old Bethpage Village Restoration, Bethpage, L.I. However, during the COVID crisis, we meet virtually on Zoom. See listing below for 2021 scheduled meetings:



Upcoming Meeting Schedule for 2021. For now, all meetings run from 9:00 am to 12 noon on the 3rd Sat of the month at Northport H.S. (directions and map attached to end of this Newsletter).

Oct 16 Les Hoffman
Nov 20 Jim Cleary
Dec 18

Club Officers for 2021

President:	Barry Saltsberg	(516) 349-1914	
	woodartist@optonline.net		
Vice Pres:	Paul Permacoff	(631) 261-7207	classakid@aol.com
Secretary:	Barry Dutchen	(516) 443 5342	
	bdutchen@gmail.com		
Treasurer:	Tony Fuoco	(631) 255-3956	
	sandman0830@aol.com		
Chair of the Board:	Ken Deaner	(516) 239-7257	ggoosie@aol.com

Members at Large

Steve Fulgoni
Jodi Gingold
John Kowalchuk
Jim Maloney
Pete Richichi

Thanks to photographers Bob Fentress and Bob Lee for their screen shots.

Summary of Meeting

Ed Note: Minutes courtesy of Les Hoffman.

We opened the meeting by thanking Dave Storch and Ed Moloney for getting us access to Northport High School for our Saturday meetings. Dave informed us that they have 4 commercial shops in their high school and 2 in their middle school. He hopes that we can work with some of the students soon to teach them to turn bowls and pens. Meeting attendance 26 + Zoom attendants. Our next exec. bd. meeting is 9/28 at 7PM via Zoom. Barry awarded plaques to Bob and Pam Urso for their years of hosting our July meetings and to Les Hoffman for service as president 2017-2020.

Treasurer's Report

Please send your dues check to Tony Fuoco @ 7 Jody Court Shoreham, NY 11786

Good and Welfare

Carl Saenger has been hospitalized with COVID

New Members

Bob Buckley, retired carpenter from Floral Park

Show-and-Tell

Don L. - blue spruce "turning" with embedded wire and inner tube



Rick S. - mahogany, clear and colored resin and Legos bowl, resin and driftwood vase
 Les H. - maple stool with off-axis legs, dyed sassafras bowl, sassafras hollow form with mineral inserts, laurel oak hollow form
 Paul P. - resin and burl vase, large beech bowl
 Mike J. - Alumalite resin jewelry with burls, stabilized wood and epoxy pendants
 Bob L. - natural edge bowl, segmented bowl with Douglas fir and cherry
 Jim M. - cherry burl vase
 Dave S. - large, segmented bowl with purple heart and red oak
 Jodi G. - branch with carved flower inserts, maple platter with carved fish
 Ken D. - purple heart and beech "Man and Dog" hollowed, carved, textured and colored



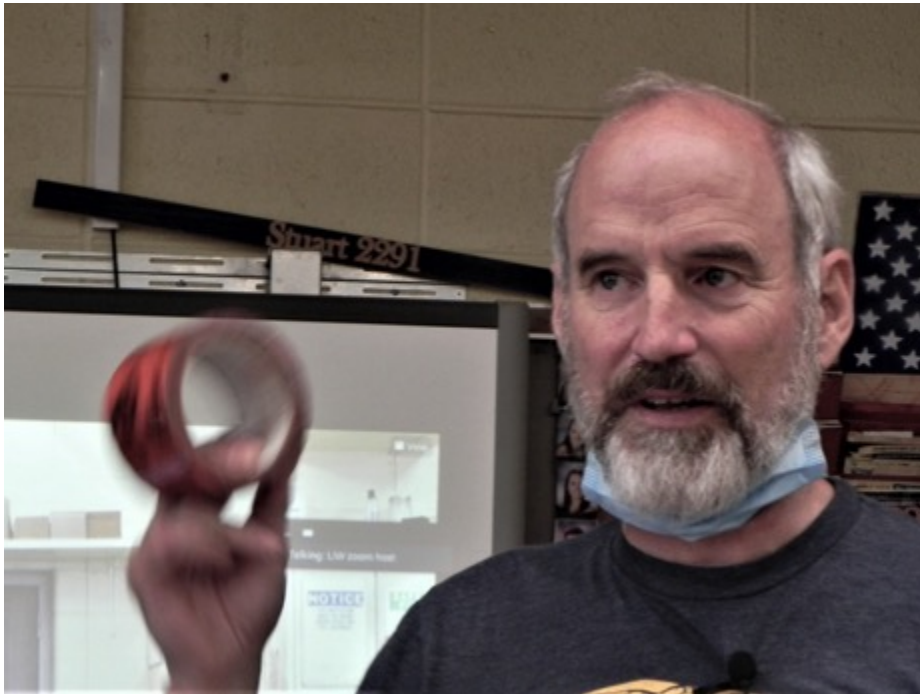




Main Event

Featured Speaker: Mike Josiah

Using Resin in Turning



Mike started with System 3 epoxy which emits heat while curing. He now uses Ecopoxy which is plant-based but requires days to set and Alumalite which stays clear for 1 year. He mentioned Liquid Glass but said it contained mercury.

Alumalite is moisture sensitive, and wood must be

bone dry and sealed with a compatible sealer before applying.

Be sure to check ratings for allowable depth of pour. Also check hardener to resin ratio. If coating your wood with one brand of epoxy, be sure it is compatible with casting epoxy. Heat gun will release surface bubbles. He uses glue syringes to remove very small bubbles by injecting them.

Mike makes his forms out of inexpensive (Costco) cutting boards, and polyethylene sheets. When necessary, he uses silicone mold release (CRC). He also uses tuck tape (used for sealing house wrap). Wax paper and parchment paper release well. He suggests watching “river table” videos to get techniques and ideas.

Mike uses a pressure pot (Harbor Freight) to eliminate visible bubbles. Mike uses 40 lbs pressure. A pressure pot makes the bubbles very small. A vacuum system would be used to remove bubbles.

Mike turns epoxy/resin pieces with a bowl gouge but cautions that Ecopoxy is very brittle, and pieces fly off. He sands to 600 grit then uses Yorkshire grit, Zona or automobile clear coat polish followed by the Beall buffing system.



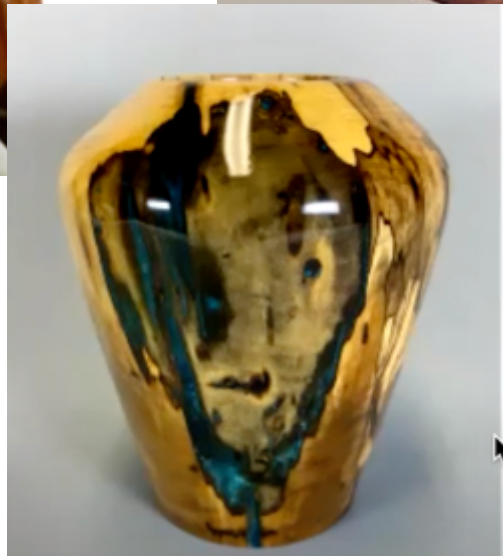
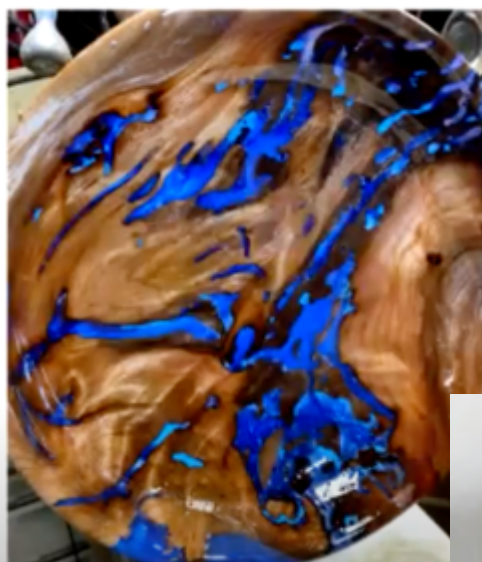
Note: Maximum thickness: Ecopoxy 4", Alupalite 1 ½ ". Pieces must be set LEVEL when pouring epoxy.



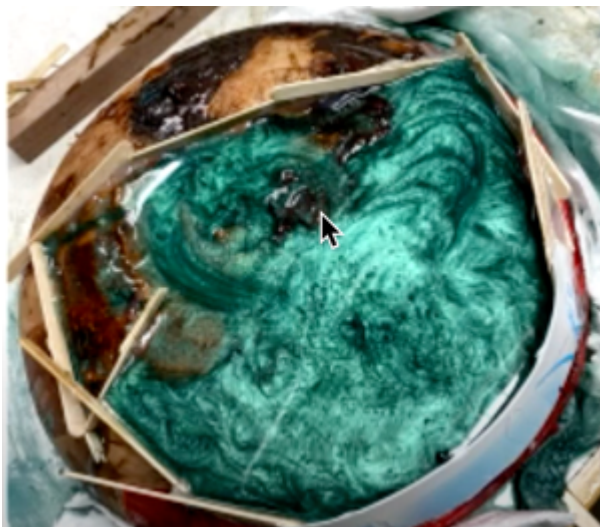
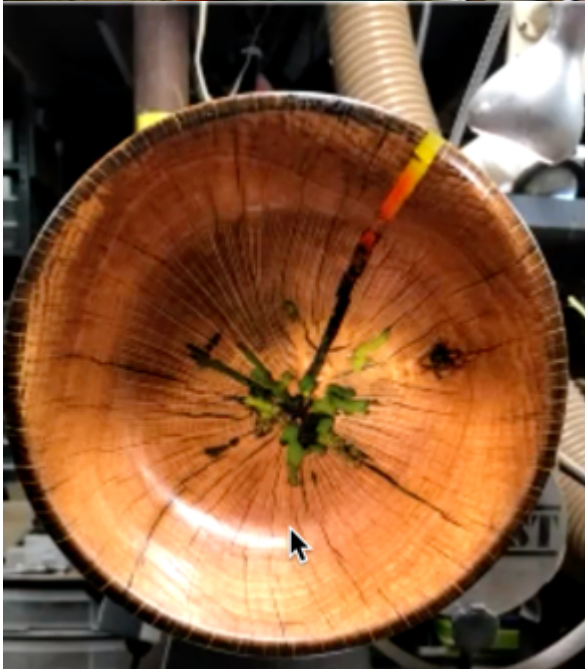
For tinting he uses toner, mica powders (Coastal Sense). Check Michaels craft stores. If you mix colors, carefully record your formula. You can also use liquid dyes. Try using "glow in the dark" or color-shifting powders.

Good information is available on the Ecopoxy's website. Also Keith Lackner's book, "Woodturning with Resin".

For his pendants, he creates his molds in plywood with forstner bits and sands both sides with a random orbital sander.



Thank you, Mike





Northport H.S. Information

We are cleared to meet at Northport High School, which is at the intersection of Elwood Road and Laurel Hill Road. To get there, take Pulaski Road and go north on Elwood. Cross the tracks and you will see the High School. Pass the high school and turn left on Laurel Hill. Turn in at the third gate (The first is an exit - doesn't count). Look to your left at the building - you should see the dust collectors. Park anywhere in that area and go in thru the door behind the dust collectors.

We will be sitting around the work benches. There are stools, but you may bring a folding chair if you wish. Masks and social distancing are required by the school authorities.

Barry S

Northport High School is near the BOCES where the club met years ago.

