



LIWA Monthly Newsletter



JULY / AUG 25, 2016

VOLUME 27, NUMBER 7,8

2016 CLUB OFFICERS

*President - Steve
Fulgoni 631-421-8664*

*Vice-President - John
Kowalchuk
631-234-1999*

*Secretary - Les
Hoffman 516-889-
0843*

*Treasurer - Joe
DeMaio 516-766-
5189*

*Pete Richichi
631-218-2481*

*Librarian - Richard
Barth 631-667-6430*

*Webmaster - Marty
Mandelbaum
631-331-3607*

*Internal Programs/
Newsletter Editor
Brian Roth
602-663-1523
pmbroth.ny@gmail.com*

CLUB CALENDAR

Our next general meeting will be September 10, at Old Bethpage Village Restoration at 9:00am.

CLUB MEETINGS

Long Island Wood turners Association, Inc. is a member of the American Association of Wood turners. We usually meet on the 3rd Saturday of each month at 9AM at the Old Bethpage Village Restoration, cafeteria of the Main Building, 1303 Round Swamp Road, Old Bethpage, NY 11804

<https://www.nassaucountyny.gov/2850/Old-Bethpage-Village-Restoration>

OUR MEETINGS

Our meetings consist of a brief business meeting followed by a "Show & Tell" of member's recent work and a demonstration by members or guest turners. All of our activities promote woodturning and opportunities for members to improve their skills. A wood and/or tool raffle is held at each meeting. A free video and text library is available for member's use. Workshops are also held at member's shops. See the Club Calendar for dates and times.

Our club website is www.liwoodturners.org . It is maintained by Marty Mandelbaum whose e-mail address is martymande@gmail.com

If you have articles for the newsletter, or items to sell please contact Brian Roth – pmbroth.ny@gmail.com

Table of Contents

2 - General Business

3 – Events

4 – Show and Tell

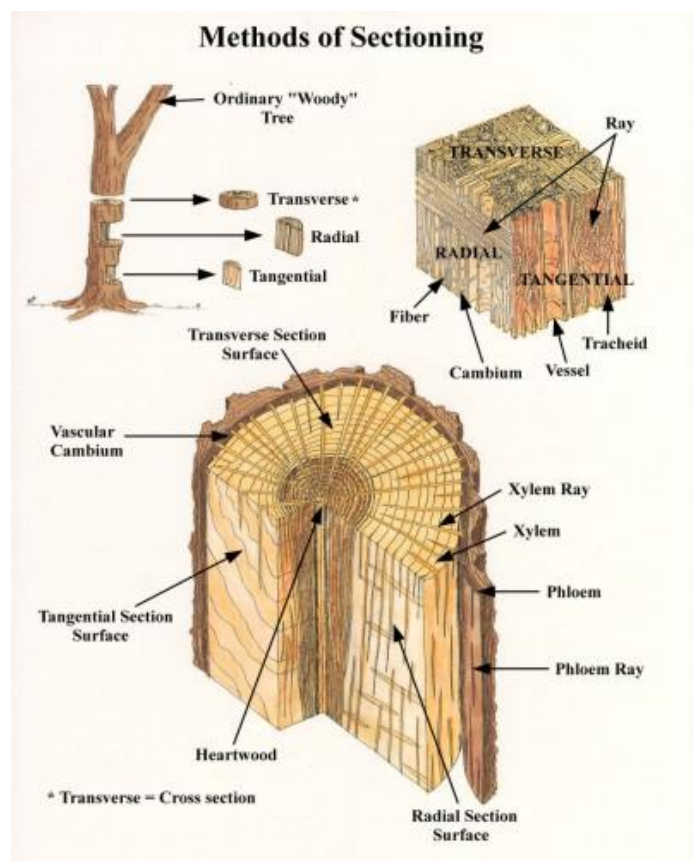
5 – Party at Bob Urso's

6- Steve Fulgoni – Demonstration
and Party

General Business



- Short sleeve shirts with the club logo have been ordered and patches may be available in the future. Our Fall Schedule will be posted on the club website.





Events

- Our next meeting is on September 10 at OBVR. All of our lathes will be set up for turning of small projects by LIWA members. Blanks for turning pens, bottle stoppers and menu card holders will be available. Members with mini-lathes are invited to bring them along with blanks for turning tops or other small items. Ken will have power and hand tools available for texturing these items and will demonstrate their use.
Those members with mandrels and fittings for pens and stoppers should bring them along with a few turning tools and wipe-on finishes.
- Our next outside turners will be Joshua Freund on October 8 and Nick Cook on November 5.
- Our holiday meeting will be on December 10 and we will have a pyrographer in February. Other demonstrations will be announced in future newsletters.
- The Center for Art in Wood in Philadelphia currently has "All Turnatives - Form and Spirit" from 8/5 - 10/15 and "Flashback/Fast Forward" from 7/22 - 10/21 in addition to its huge inventory of woodturnings. If you need inspiration for some new work, it is well worth the drive.
- Also, the Mid-Atlantic Regional Woodturning Symposium is in Lancaster, PA on September 24-25 with 8 professional demonstrators.





Show and Tell



Party at Bob's – July 2016

While this has been a very hot Summer, we have had two cool events for LIWA members. Our annual picnic at Bob Urso's was well attended and tastefully catered. The weather was perfect. While most just ate, talked and looked at some Show and Tell pieces, a few members and wives joined Pam inside to work on her Cricut arts and crafts machine. Then in August, we enjoyed breakfast, lunch, Steve Fulgoni's demo and some rain at Steve's house. For those who could not attend, here is a summary of his demonstration:





DEMONSTRATION - Steve Fulgoni, 7 basics of woodturning and began with "Grain Alignment"



He rough turned a spindle blank using a roughing gouge and explained turning the end grain "down hill" and how the fibers



support the cut. He then showed how to make a scraping cut using the lower part of a swept back bowl gouge and how to use more or less of that edge by moving the tool handle more parallel to the ways.

Steve then rough turned a bowl blank, beginning between centers using a safety drive. He flattened the pith side of the blank with his gouge and attached a face plate using square drive #12 screws.



After re-mounting the blank, he shaped the outside with his bowl gouge using a rough cut and then using a supported push cut, working from the base toward the lip of the bowl. After cutting a tenon with a special scraper to match his dove-tail jaws, he reversed the blank, emphasizing the careful sizing of the tenon and FULL contact with the shoulder.



He started hollowing using his 55 degree bowl gouge, keeping the tip on or slightly lower than center, starting from the



outside working in and keeping the tip 180 degrees to the wood until it starts to cut and rotating it upward. After hollowing most of the bowl, Steve switched to his 80 degree gouge to finish the bowl.



Summer Fun at Steves'



