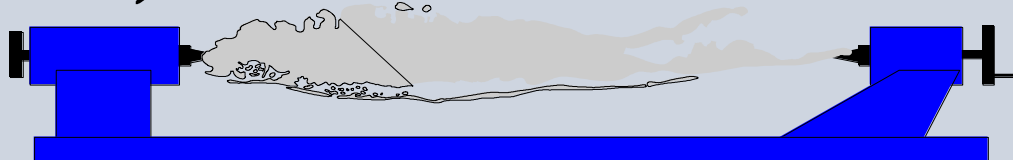




Long Island Woodturner's Association



SEPTEMBER 20, 2014

VOLUME 25, NUMBER 9

2013 CLUB OFFICERS

President - Steve Fulgoni
631-421-8664

Vice-President - John Kowalchuk
631-234-1999

Secretary - Les Hoffman
516-889-0843

Treasurer - Joe DeMaio
516-766-5189

Program Chairmen - Joel Rakower
631-462-1186
Pete Richichi
631-218-2481

Librarian - Richard Barth
631-667-6430

Webmaster - Marty Mandelbaum
631-331-3607

Newsletter Editor - Brian Roth
602-663-1523
pmbroth.ny@gmail.com

CLUB CALENDAR

Our next general meeting will be October, 18th at BOCES at 9:00 am.

CLUB MEETINGS

Long Island Wood turners Association, Inc. is a member of the American Association of Wood turners. We usually meet on the 3rd Saturday of each month at 9AM at the BOCES, Wilson Tech Campus in Dix Hills. Please check our calendar for 2014 meeting dates.

Directions- LIE to exit 51 (Deer Park Avenue). Go east one block on the service road to Westminster Ave. Turn right and proceed to the BOCES entrance. Turn left and proceed to Bldg "D".

OUR MEETINGS

Our meetings consist of a brief business meeting followed by a "Show & Tell" of member's recent work and a demonstration by members or guest turners. All of our activities promote woodturning and opportunities for members to improve their skills. A wood and/or tool raffle is held at each meeting. A free video and text library is available for member's use. Workshops are also held at member's shops. See the Club Calendar for dates and times.

Our club website is www.liwoodturners.org . It is maintained by Marty Mandelbaum whose e-mail address is [martymande@gmail](mailto:martymande@gmail.com)

Table of Contents

2 – General Business

2 – Events

3 – Show and Tell

7 – Demonstration Les Hoffman,
How to do Captive-Ring Goblets

9 – Safety Introduction on the Lathe

General Business

- Steve will re-send his questionnaire about outside/inside turners and demos. He will meet with Joel and Pete after receiving some responses
- New Member: Paul Permakoff, 4 Dick Court, Northport, NY 11768 631-261-7207 classakid@aol.com
- It has been suggested that Marty put directions to BOCES on our Website.

Events

- LI Woodcarvers Show 9/28/14 at Levittown Hall, 201 Levittown Parkway, \$30 to vend or exhibit. Wood turner needed to demo - contact Gene Sanders for info
- LI Woodworkers Show 11/8-9/14 at Old Bethpage. Volunteers needed for demonstrators can sell your exhibit from our booth.
- Executive Board will meet AFTER our 10/18 regular meeting at the Premier Diner on Commack Road.
- Midwinter symposiums - please speak to John or Steve regarding travel and attendance
- If you need a name tag, please see Chris at the next meeting
- Outside turners - 5/30/15 Sharon Doughty, 9/2015 Mike Mahoney



Show and Tell

Charlie P. - Catalpa cowboy hat, 2 segmented bowls

Lenny M. - Cherry burl winged bowl, staved zebrawood footed bowl with cover, ch. burl winged bowl

Barry S. - Green aniline-dyed bowl

Les H. - 7 captive ring goblets on revolving tray, off-axis platter - carved and colored, bleached walnut winged bowl, reverse-hollowed holly piece, pierced with pyrographic leaves

Bob U. - Bowl with veneers, bowl with colored card stock, multi-wood platter with colored translucent epoxy

Tiberio Y. - Thin square bowl made of two veneers

Joel R. - cremation urn with hand-threaded chased top

Steve F. - Red malle burl bowl, cherry bowl with burned and colored leaves, poplar vase with burned, textured and colored leaves

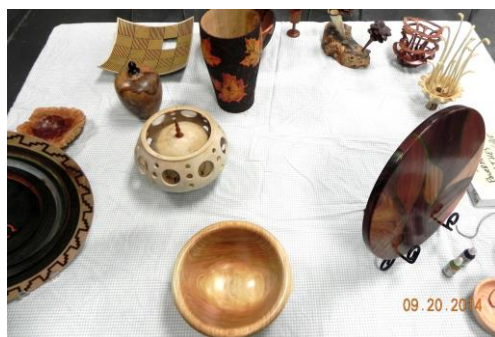
John K. - 4 "muddlers"

Gene S. - Small box

Bob F. - 5 axis cup

Ken D. - Turned, steamed, carved and textured "marine shapes" created from wet wood and burls at Arrow Mont









Demonstration

Les Hoffman

Demonstrated how to turn captive-ring goblets including hollowing the cup, measuring and cutting the rings, sanding the rings and turning the foot and stem with a spindle gouge.





SAFETY

Safety & Introduction to the Lathe

It is of utmost importance to teach through example proper respect for equipment and an attitude of safety. After discussing safety concerns with the group, be sure to reinforce safety principles as you provide individual instruction. It is good practice to start each lesson with a safety reminder.



1. Use a full faceshield
2. Tie back long hair, do not wear gloves, and avoid loose clothing objects that may catch on rotating parts or accessories.
3. Always check the speed of the lathe before turning it on. Use slower speeds for larger diameters or rough pieces, and higher speeds for smaller diameters and pieces that are balanced. Always start a piece at a slower speed until the work piece is balanced. If the lathe is shaking or vibrating, lower the speed. If the workpiece vibrates, always stop the machine to check the reason.
4. Check that all locking devices on the tailstock and tool rest assembly (rest and base) are tight before operating the lathe.
5. Position the tool rest close to work, almost touching the wood. Check tool rest position often and as wood is removed, turn off the lathe and re-position the rest.
6. Rotate your workpiece by hand to make sure it clears the toolrest and bed before turning the lathe "on." Be certain that the workpiece turns freely and is firmly mounted. A handwheel on the outboard side of the headstock simplifies this process of spinning the lathe by hand before turning on the switch.
7. Be aware of the turners call the "red zone" or "firing zone." This is the area directly behind and in front of the workpiece - the areas most likely for a piece to travel as it comes off the lathe. A good safety habit is to stop out of this zone when switching the lathe to the "on" position. When observing others turn stay out of the area.
8. Hold turning tools securely on the toolrest, holding the tool in a controlled and comfortable manner. Always contact the tool rest with the tool before contacting the wood.
9. It is safest to turn the lathe "off" before adjusting the toolrest or tool rest base (banjo).
10. Remove the tool rest before sanding or polishing operations.
11. Never leave the lathe running unattended. Turn the power off. Don't leave that lathe until it comes to a complete stop.