



OCTOBER 26, 2014

VOLUME 25, NUMBER 10

2013 CLUB OFFICERS

President - Steve Fulgoni 631-421-8664

Vice-President - John Kowalchuk 631-234-1999

Secretary - Les Hoffman 516-889-0843

Treasurer - Joe DeMaio 516-766-5189

*Program Chairmen - Joel Rakower 631-462-1186
Pete Richichi 631-218-2481*

Librarian - Richard Barth 631-667-6430

Webmaster - Marty Mandelbaum 631-331-3607

*Newsletter Editor - Brian Roth 602-663-1523
pmbroth.ny@gmail.com*

CLUB CALENDAR

Our next general meeting will be November, 22 at BOCES at 9:00 am.

CLUB MEETINGS

Long Island Wood turners Association, Inc. is a member of the American Association of Wood turners. We usually meet on the 3rd Saturday of each month at 9AM at the BOCES, Wilson Tech Campus in Dix Hills. Please check our calendar for 2014 meeting dates.

Directions- LIE to exit 51 (Deer Park Avenue). Go east one block on the service road to Westminster Ave. Turn right and proceed to the BOCES entrance. Turn left and proceed to Bldg "D".

OUR MEETINGS

Our meetings consist of a brief business meeting followed by a "Show & Tell" of member's recent work and a demonstration by members or guest turners. All of our activities promote woodturning and opportunities for members to improve their skills. A wood and/or tool raffle is held at each meeting. A free video and text library is available for member's use. Workshops are also held at member's shops. See the Club Calendar for dates and times.

Our club website is www.liwoodturners.org . It is maintained by Marty Mandelbaum whose e-mail address is martymande@gmail

Table of Contents

2 – General Business

2 – Events

3 – Show and Tell

5 – Demonstration - Bob Urso on Veneered Bowls and Vessels

9 – Safety Introduction on the Lathe

General Business

- At the 10/7 meeting at John's shop, 7 attendees turned salad spoons. At the Dec. /Jan. workshops we will be turning small stools. Charlie will be supplying blanks for the seats and legs and help us drill and assemble the stools.
- Treasury has \$3,094.69. A few of the 81 members on the roster still owe dues for 2014.
- Library - Rich Barth still needs a back-up for any meetings he can't attend. Rich will be locking up the DVDs for better control and will post the RULES for the library plus a current list of books and DVDs available
- New member - John Gallagher of Hunt. Station.
- Don L. brought wood for distribution to the members and Charlie P. contributed wood for the monthly raffle.
- Mike J. has volunteered to help assemble a book with photos of Bob Brady blanks and finished pieces and short quotes from members. Many blanks are still available at Steve's warehouse. Mike also stated that his company can now do t-shirts. Marty will work on the logo and the shirts will sell for \$15, with \$5 going to the club.
- Pete R. still needs demonstrators for up-coming meetings. Also, he has a long bed Milford lathe for sale

Events

- The LI Woodworker's Show is at Bethpage Restoration Village on November 8 & 9 from 10AM - 4PM. LIWA members will do demos on mini-lathes in our booth. Members also can display and/or sell their work from the booth or at the gift shop. Tools may also be sold. Please tag each piece for sale with your name and price. The LI Woodworker's will received a 15% commission on all sales. Bob Brady bowls can be sold without a commission charge with proceeds returned to LIWA. (Members who are demonstrating should bring their own blanks, lights and chucks.)
- Midwinter symposiums - please speak to John or Steve regarding travel and attendance
- If you need a name tag, please see Chris at the next meeting
- Outside turners - 5/30/15 Sharon Doughty, 9/2015 Mike Mahoney
- LIWA Meeting Dates – December 13, January 17, March 7, March 28, April 18, May 30, June 20th

Show and Tell

Henry Z. - Huge (21"-22") spalted maple bowl and 8 pen.

Steve F. - Four 2-piece hollow forms.

Carl S. - Cherry burl natural edge bowl, sealed with shellac and finished with Deft spray.

Les H. - Cherry salad spoons, 2 yarn bowls, captive ring goblet with 9 rings on 2 axes.

Ken D. - Yellow heart salad spoons, 2 covered bowls, burned carved textured and colored.

Bob U. - 3 Veneered bowls for his demo.

Bob F. - 4 Axis stemmed goblet.

Bob D. - 2 Pens made from comic strip newsprint blanks.

Brian R. - 3 Pens made with pressure pot, using resin and dye to form blanks as a corn cob that has been stabilized using a vacuum chamber.

Steve requested that older members bring some of their old pieces for Show & Tell





Demonstration

Bob Urso on Veneered Bowls and Vessels

Bob showed how he glues up band sawed blanks with wood or paper veneers. He sands the sawn halves with 120 grit and applies wood glue to all pieces.



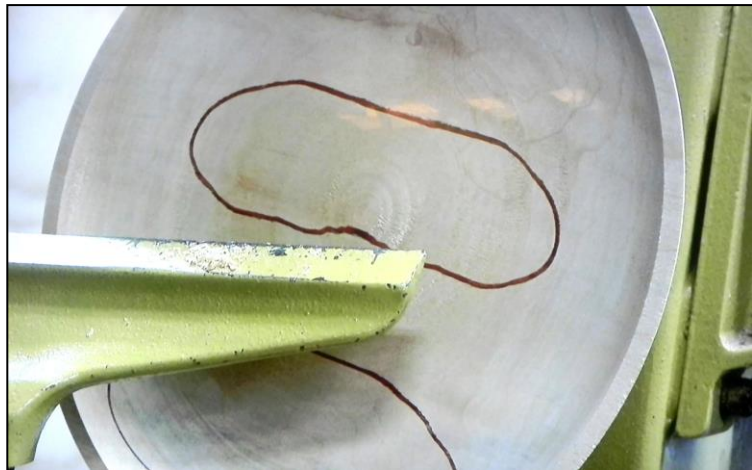
For small sections of veneer he uses push pins to hold them.



He suggests using light wood and dark plain veneers or vice versa. He also re-saws Corian, bend the pieces after heating them in an oven and uses wood cauls to bend them.

Bob roughly shapes the outside of the bowl and proceeds to shape the inside carefully, stopping often to observe the design. Bob turned a black walnut bowl, a 12" platter and a small Corian veneered burl piece.







Please review Bob's handout before trying a veneered piece and DO NOT BURN the Corian it can produce a DEADLY GAS.

SAFETY

Safety & Introduction to the Lathe

It is of utmost importance to teach through example proper respect for equipment and an attitude of safety. After discussing safety concerns with the group, be sure to reinforce safety principles as you provide individual instruction. It is good practice to start each lesson with a safety reminder.



1. Use a full faceshield
2. Tie back long hair, do not wear gloves, and avoid loose clothing objects that may catch on rotating parts or accessories.
3. Always check the speed of the lathe before turning it on. Use slower speeds for larger diameters or rough pieces, and higher speeds for smaller diameters and pieces that are balanced. Always start a piece at a slower speed until the work piece is balanced. If the lathe is shaking or vibrating, lower the speed. If the workpiece vibrates, always stop the machine to check the reason.
4. Check that all locking devices on the tailstock and tool rest assembly (rest and base) are tight before operating the lathe.
5. Position the tool rest close to work, almost touching the wood. Check tool rest position often and as wood is removed, turn off the lathe and re-position the rest.
6. Rotate your workpiece by hand to make sure it clears the toolrest and bed before turning the lathe "on." Be certain that the workpiece turns freely and is firmly mounted. A handwheel on the outboard side of the headstock simplifies this process of spinning the lathe by hand before turning on the switch.
7. Be aware of the turners call the "red zone" or "firing zone." This is the area directly behind and in front of the workpiece - the areas most likely for a piece to travel as it comes off the lathe. A good safety habit is to step out of this zone when switching the lathe to the "on" position. When observing others turn stay out of the area.
8. Hold turning tools securely on the toolrest, holding the tool in a controlled and comfortable manner. Always contact the tool rest with the tool before contacting the wood.
9. It is safest to turn the lathe "off" before adjusting the toolrest or tool rest base (banjo).
10. Remove the tool rest before sanding or polishing operations.
11. Never leave the lathe running unattended. Turn the power off. Don't leave that lathe until it comes to a complete stop.

