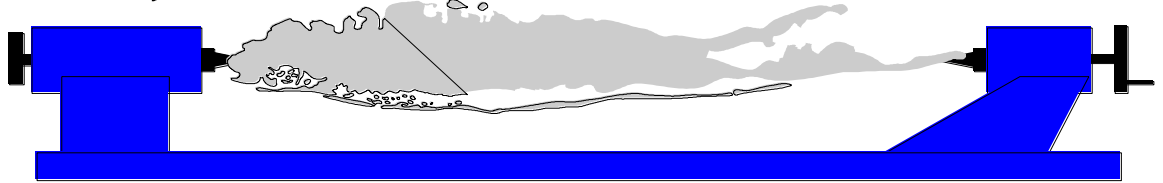


# *Long Island Woodturner's Association*



**2011**

**Volume 21 Issue 3**

## **Long Island Woodturner's Association**

LIWA is a chapter of the American Association of Woodturners. Our purpose is to foster a wider interest and appreciation of woodturning on Long Island and in the metropolitan area. We generally meet on the third Saturday of each month from 9:00 AM to Noon at BOCES, Wilson Tech Campus in Dix Hills. See the calendar for scheduled meetings for 2010-11 in our current club newsletter.

### **Directions**

Take the LIE to Exit 51 (Deer Park Ave). Go east on the Service Road 1 block and turn right onto Westminister Ave. Turn left into BOCES Wilson Tech Campus and go to Building "D".

## **2011 Club Officers**

<b>President</b>	<b>Ken Deaner</b>	<b>(516) 239-7257</b>
<b>Vice President</b>	<b>Don Lindsley</b>	<b>(631) 751-5680</b>
<b>Secretary/Newsletter</b>	<b>John Kowalchuk</b>	<b>(631) 234-1999</b>
<b>Treasurer</b>	<b>Joe DeMaio</b>	<b>(516) 766-5189</b>
<b>Program Chairmen</b>	<b>Joel Rakower</b>	
	<b>Pete Richichi</b>	<b>(631) 218-2481</b>
<b>Librarian</b>	<b>Bette Adamo</b>	<b>(631) 368-4186</b>
<b>Webmaster</b>	<b>Marty Mandelbaum</b>	<b>(631) 331-3607</b>

The Club offers a wide range of opportunities for its members to improve their turning techniques and enjoy the company of other turners. There are demonstrations at our Club meetings. Renowned guest turners do 6 hour workshops several times during the year at a nominal expense to club members. A free video and text library is available for their use. Members are invited to participate in our monthly wood raffle. All members are encouraged to bring samples of recent work to our 'SHOW & TELL' and become active participants. The Club participates in the American Association of Woodturners and encourages its members to join our parent organization. Many members attend their yearly symposium.

Visit our Club's website and meet our members at [www.liwoodturners.org](http://www.liwoodturners.org) Our site is maintained by **Marty Mandelbaum** who you can e-mail at [martymande@gmail.com](mailto:martymande@gmail.com).

## **Club Calendar**

**April 5, 2011**

### **Tuesday Morning Meeting**

John Kowalchuk's shop  
"Turning Bottle Stoppers"

**April 16, 2011**

### **LIWA Meeting 9:00-2:30\***

#### **Andi Wolfe-Guest Turner**

Andi will demonstrate her carving techniques on a turned vessel.

The meeting will begin promptly at 9:00 so please arrive early. There will be a \$25 fee for this demonstration including lunch.

[www.andiwolfe.com](http://www.andiwolfe.com)

**May 20, 2011**

### **Annual LIWA Dinner 7pm**

Bertucci's Restaurant,  
Rte 110 Huntington, NY  
\$ 29 per person incl. gratuity.  
Wine, Beer etc available at the bar.

This is a fun night for members and their significant other/guests to enjoy good company, fine food and for our guests to see our members' artwork on display.

Members are asked to bring some of their completed turnings for "Show and Tell".

## 2011UPCOMING GUEST TURNERS

**Dixie Biggs**

**“Carving and Woodturning”**

**May 21, 2011**

There is one opening remaining for Dixie's full day carving workshop at John Kowalchuk's shop, May 20, 2011. See Joel Rakower for details.

## **Club Meeting Notes**

### **Boces Woodturning Workshop**

On March 16, 2011, 12 LIWA members instructed woodturning to two groups of 18 BOCES students at the Wilson Tech Center.

Eight lathes were available for the students. Bob Brady explained and demonstrated woodturning techniques and safety procedures in turning a bowl. The students were divided into eight groups and turned a bowl with the supervision and instruction from LIWA members.

Two groups of approximately 18 students per group, one morning and afternoon session, participated in the introductory woodturning workshop.



The students were very interested and enjoyed the woodturning experience. Each student turned a bowl and was able to take home a completed bowl.

Thanks to **Norm Abrams** for coordinating the day and to all the LIWA volunteers for

supplying their expertise, wood blanks, tools and enthusiasm to make this a productive and leaning experience for the BOCES students.

### **Welcome New LIWA Members**

The LIWA welcomes two new members, **Sharon Friedrich** of Huntington and **Marty Platt** of Stony Brook.

### **Campbell Folk School**

**Jim Cleary** reported on his visit to the Campbell Folk School. Jim felt that the school offered excellent classes in woodturning as well as in dozens crafts from painting to quilting. For details about the school, visit their website: [www.folkschool.org](http://www.folkschool.org)

### **Rockville Centre Library Show\*** **May 1-31 2011**

The LIWA will be displaying members' turnings at the Rockville Centre Library throughout the month of May 1-31 2011.

**\*Members who to include their pieces in the show should bring them to Les Hoffman or Ken Deaner at the April 16, 2011 LIWA meeting.**

\$

Any LIWA member that has not remitted dues for the 2011 year should see Treasurer Joe DeMaio at the April 16, 2011.

### **March Demonstration** **Bob Brady-“Hollowing”**

Bob discussed methods for hollowing when using side grain or end grain orientation.



Hollowing side grain blanks can be achieved by using bowl gouges.

End grain hollowing requires a different approach as the wood fibers are all being cut across the end grain. Scraping tools are effective to remove end grain wood.



Bob showed how to make a scraper by purchasing some tool steel and grinding the proper angle on your grinder.

Bob also made a "scooping" tool by using a one-quarter inch car fender washer and fixed on a rod securing the washer with two nuts. The washer was ground to a sharp edge. This type of tool is also quite useful and effective when hollowing end grain.

Bob demonstrated a bent tool for hollowing. The tool has an approximately 90 degree bend. This allows the cutting tip to hollow

much farther to the inside and left of the vessel. A straight hollowing tool cannot reach "under" and cut as a bent tool.

In addition, Bob showed how to fabricate "S" shaped calipers using thin aluminum stock. These calipers will accurately measure vessel thickness.

Bob used his homemade scrapers to hollow engrain, and to apply a finishing cut to the inside of the hollowed vessel. He explained that a freshly sharpened scraper would yield a very smooth finish after the desired vessel thickness is reached.

Thanks Bob, for your interesting demonstration on hollowing techniques and fabricating tools.

## Show and Tell

**Carl Saenger**-3 boxes, small, med, large w/eccentric finials



**Lou Howard**-3 segmented vessels w/inlays, feature rings.





**Jim Cleary**-lidded boxes, sphere, bowling pin, turned eggs, eccentric 4 legged box, Celtic knot rolling pin, thuya burl dish



**Peter Richichi**-segmented mahogany deep bowl 12" x 12", shellac finish



**Les Hoffman**-2 small mulberry bowls, 2 southwestern boxes, ambrosia maple dish



**Bette Adamo**-camera monopod top of cherry.

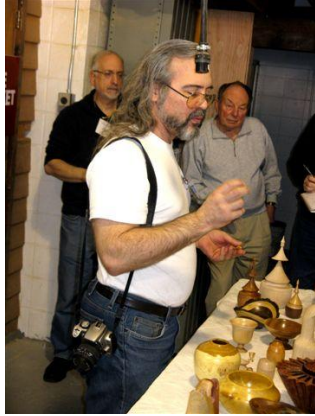


**Charles Panzner**-partially turned 3 footed maple bowl.

**Ken Deaner**- sm. Bowl w/mineral oil finish, "geared" lidded vessel-carved, textured, colored



**Martin Rost**- tiny turned eggs, of rhododendron, tiny goblets, sm. Cherry vase



**Paul MacMenamin**-unk. species of wood-  
large bowl w/tung oil finish, natural edge  
bowl w/bark-lacquer finish



Newsletter photos:  
**Bob Fentress**