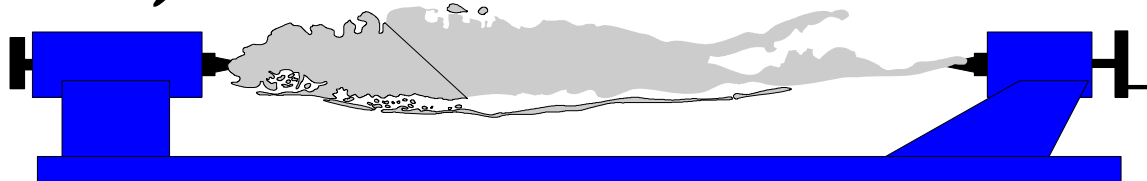


# Long Island Woodturner's Association



2010

Volume 20 Issue 11

## Long Island Woodturner's Association

LIWA is a chapter of the American Association of Woodturners. Our purpose is to foster a wider interest and appreciation of woodturning on Long Island and in the metropolitan area. We generally meet on the third Saturday of each month from 9:00 AM to Noon at BOCES, Wilson Tech Campus in Dix Hills. See the calendar for scheduled meetings for 2010-11 in our current club newsletter.

### Directions

Take the LIE to Exit 51 (Deer Park Ave). Go east on the Service Road 1 block and turn right onto Westminister Ave. Turn left into BOCES Wilson Tech Campus and go to Building "D".

## 2010 Club Officers

President	Ken Deaner	(516) 239-7257
Vice President	Don Lindsley	(631) 751-5680
Secretary/Newsletter	John Kowalchuk	(631) 234-1999
Treasurer	Joe DeMaio	(516) 766-5189
Program Chairmen	Joel Rakower	
	Pete Richichi	(631) 218-2481
Librarian	Bette Adamo	(631) 368-4186
Webmaster	Marty Mandelbaum	(631) 331-3607

The Club offers a wide range of opportunities for its members to improve their turning techniques and enjoy the company of other turners. There are demonstrations at our Club meetings. Renowned guest turners do 6 hour workshops several times during the year at a nominal expense to club members. A free video and text library is available for their use. Members are invited to participate in our monthly wood raffle. All members are encouraged to bring samples of recent work to our 'SHOW & TELL' and become active participants. The Club participates in the American Association of Woodturners and encourages its members to join our parent organization. Many members attend their yearly symposium.

Visit our Club's website and meet our members at [www.liwoodturners.org](http://www.liwoodturners.org). Our site is maintained by **Marty Mandelbaum** who you can e-mail at [martymande@gmail.com](mailto:martymande@gmail.com).

## Club Calendar

**Club Meeting**-December 18, 2010  
**8:30-12:00\***

\*Arrive early to enjoy the LIWA's annual **Holiday Breakfast**.

**Bill Holland** will discuss and demonstrate applying various finishes for woodturnings.

**Club Meeting**-January 22, 2011

**Joel Rakower** will discuss and demonstrate "Turning for beginners and others".

## Tuesday Morning Meeting-9:00-Noon

The December 7, 2010 Tuesday morning was held at **Ken Deaner's** shop in Lawrence. Many of us were able to see Ken's newly expanded workspace. Methods and techniques of embellishing woodturnings such as burning, carving, and texturing were discussed and demonstrated.

The January 4, 2011 Tuesday Morning location and topic will be posted in the next newsletter.

## CLUB MEETING NOTES

The LIWA welcomes **Gary McIntyre** of Yaphank, **Rich Brown** of Rockville Centre, **Milton Kaufman** of Hauppauge and **Dan Wilson** of East Moriches as new members.

- ✓ There is still an opportunity for you to bring in your miniature turnings for the AAW Collaborative Project. Our collective effort will be sent to the

AAW and entered in the 2011 competition in January. Please bring your completed turning(s) to the December club meeting.

- ✓ **Carl Saenger** reported that the entire selection of our members' turnings is available for pickup at the December 18, 2010 club meeting.
- ✓ **Treasurer Joe DeMaio** reported that the current treasury balance is \$2,261.
- ✓ Club dues for 2011 should be paid to Joe by the end of this year.
- ✓ **Bette Adamo** has photographed the LIWA's "Yellow Submarine" and will have 5x7 postcards made with a photo and a brief description of the project.
- ✓ Bette Adamo informed the group that a metal lathe is for sale.  
For more information, contact "Lucy"  
631-673-5458

If you are having difficulty receiving any of the LIWA's correspondence by e-mail, please send an email to our **Webmaster Marty Mandelbaum**. His email address is listed on the front page of this newsletter.

Steve Fulgoni will be ordering band saw blades for anyone interested. A 15 % discount is available if the total order is 10 or more blades. Email Steve with your blade information soon.  
[sfulgoni@optonline.net](mailto:sfulgoni@optonline.net)

## November Demonstration

### Charles Panzner-Segmented Turning

LIWA member Charles Panzner demonstrated his method of constructing pieces for a segmented turning.

### Highlights of Charlie's discussion:

To begin, cut boards to the desired thickness and width.

Using a table or miter saw to cut individual segments to size.



Glue and clamp two segments together making one two-piece segment.



Next, glue each two segmented piece to another make a four segmented section of the ring. Continue to glue sections of a ring until the desired number is reached. For this demonstration, Charlie used 24 segmented for each ring.

Clamps and tape hold the two and four segment sections together while drying.

Charlie also used masking tape to hold the outside part of each segment to another while preparing for each glue-up. Charlie prefers yellow glue for his segmented bowls and vessels.

When two halves (12 pieces) are glued together, Charlie tests the fit of each half ring to each other. If the fit is not perfect, he will sand each half ring on a disk sander or by hand until they mate to form a perfect

union with no light showing in the two final joints.

A homemade band clamp is fastened around the entire ring until the two halves are glued and dried.

Next, the 24 segment ring is mounted onto a wooden disk that is secured with a faceplate. The ring is centered on the disk and wood screws are fastened snugly to the outside of the ring. This step holds the ring in place when the lathe is running.



With the lathe now running, Charlie flattens the face of the ring using including a gouge and round nose scraper.

Checking with a metal straight edge, Charlie can see if the ring is properly flat. A six inch wide flat board, with sandpaper glued to it, is now gently held against the spinning ring to ensure flatness.

Rings of varying diameters are layered upon each other to form the desired shape. These rings, assembled as previous one described, can be comprised of a single or several species of wood.

Charlie likes to use native Long Island woods for his segmented turnings. He has many rings made and stored in his workshop. He will sort through his stockpile and choose what looks good to him. Some of his rings are of just one type of wood while other rings include three, four or even six different species.

Charlie emphasized that segmented construction can allow the turner the freedom to choose an infinite combination of colors and designs when planning a segmented turning.

Thank you Charlie, for an interesting and informative demonstration.

## Show and Tell

**C. Panzner**-footed maple bowl, footed elm bowl, elm hat



**T. Yepes**-shallow bowl comprised of 60,00 veneers glued together and turned on CNC machine



**Bob Sesti**-maple burl bowlw/stem & finial, walnut bowl w/stem and finial, burned,carved walnut bowl w/rim

**L.Hoffman**-fluted ambrosia maple bowl, "chip & dip" bowl of white cedar w/glass dish

**K.Deaner**-closed end red cedar bowl w/decorated rim, footed vessel carved and colored, wood type unk., fluted cherry vessel & hand carving

**B.Brady**-scaled to size Cape Hatteras lighthouse w/oak staves, open segmented vessel of sapele & maple



**J.Kowalchuk**-paduak rolling pin with Celtic knot of bloodwood & maple inset into the padauk

**M.Josiah**-wild cherry bowl w/malachite inlay

**T.Germano**-sassafrass bowl w/ogee stem, finished w/bush Oil and wax

**D.Lindsley**-four footed box elder bowl, box elder bowl w/tall legs

**Barry Saltzberg**-mulberry vessel hollowed, carved, pierced

**B.Kaplan**-eccentric cherry bowl

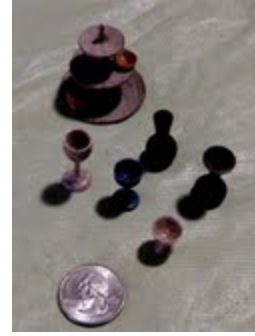
**M.Bishop**-amb maple bowl w/ 30 inset stones, walnut bowl, pin oak hollow form, mulberry vase w/carved swirl, hollowed ball, Leland cypress hollow for,

**M.Rost**-dogwood vase, mini duplication of our collaborative entry to AAW, many tiny turnings

**J.Cleary**-spalted maple vessel, cherry bowl w/wings and walnut lid

**Cliff Furcall**- Hollowed hickory vessel yew bowl w/bark inclusion, maple & walnut bowl w/finial

**P.MacMenamin**-walnut box w/lapis inlay, 3 tiny stemmed cups



Newsletter photos:  
**Bob Fentress**  
**Bette Adamo**