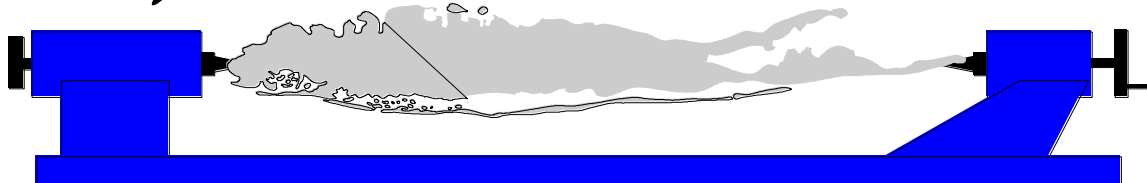


# *Long Island Woodturner's Association*



**2010**

**Volume 20 Issue10**

## **Long Island Woodturner's Association**

LIWA is a chapter of the American Association of Woodturners. Our purpose is to foster a wider interest and appreciation of woodturning on Long Island and in the metropolitan area. We generally meet on the third Saturday of each month from 9:00 AM to Noon at BOCES, Wilson Tech Campus in Dix Hills. See the calendar for scheduled meetings for 2010-11 in our current club newsletter.

### **Directions**

Take the LIE to Exit 51 (Deer Park Ave). Go east on the Service Road 1 block and turn right onto Westminister Ave. Turn left into BOCES Wilson Tech Campus and go to Building "D".

## **2010 Club Officers**

<b>President</b>	<b>Ken Deaner</b>	<b>(516) 239-7257</b>
<b>Vice President</b>	<b>Don Lindsley</b>	<b>(631) 751-5680</b>
<b>Secretary/Newsletter</b>	<b>John Kowalchuk</b>	<b>(631) 234-1999</b>
<b>Treasurer</b>	<b>Joe DeMaio</b>	<b>(516) 766-5189</b>
<b>Program Chairmen</b>	<b>Joel Rakower</b>	
	<b>Pete Richichi</b>	<b>(631) 218-2481</b>
<b>Librarian</b>	<b>Bette Adamo</b>	<b>(631) 368-4186</b>
<b>Webmaster</b>	<b>Marty Mandelbaum</b>	<b>(631) 331-3607</b>

The Club offers a wide range of opportunities for its members to improve their turning techniques and enjoy the company of other turners. There are demonstrations at our Club meetings. Renowned guest turners do 6 hour workshops several times during the year at a nominal expense to club members. A free video and text library is available for their use. Members are invited to participate in our monthly wood raffle. All members are encouraged to bring samples of recent work to our 'SHOW & TELL' and become active participants. The Club participates in the American Association of Woodturners and encourages its members to join our parent organization. Many members attend their yearly symposium.

Visit our Club's website and meet our members at **[www.liwoodturners.org](http://www.liwoodturners.org)**. Our site is maintained by **Marty Mandelbaum** who you can e-mail at **[martymande@gmail.com](mailto:martymande@gmail.com)**.

## **Club Calendar**

### **Long Island Woodworkers Show**

Old Bethpage Village  
November 6-7, 2010

### **LIWA Club Meetings**

November 20, 2010  
Demonstrator- **Charles Panzner**  
**"Segmented Turning"**

December 18, 2010  
Demonstrator-**Bill Holland**  
**"Finishing"**

**Tuesday Morning Meeting –**  
**Ken Deaner's Shop**  
**December 7, 2010**  
**9:00 am-12:00**

The next meeting will be at **Ken Deaner's** shop in Lawrence, Anyone wishing to carpool should contact John Kowalchuk. Please contact Ken for directions to his house.

## **CLUB MEETING NOTES**

- Norm Abrams reported on the "BOCES Outreach" program. LIWA members will be introducing the basics of woodturning to the carpentry students in a morning and afternoon session in the spring, 2011. Anyone interested in helping out should contact Norm at one of our future meetings.

- The LIWA is participating in the AAW's collaborative challenge for 2011. The AAW has set physical limitation of 8" x8" x8" to be accepted for judging.  
The project will include three tiers with a three wooden plate holding small turnings of no more than one inch x two inches or smaller.  
Use your imagination and turn a unique piece of that size for our collaborative entry.  
The entry is being mailed to the AAW by February 2011 so please get to work on your piece(s) soon.



- LIWA Treasurer **Joe DeMaio** reported that the club's balance is \$ 2,237
- If you are not receiving emails from the LIWA, please email Webmaster Marty Mandelbaum directly so he has your correct address.

## October Demonstration

### Les Hoffman-"Goblet with Captive Rings"

Les began his demonstration by mounting a blank between centers and turning a tenon, which was held later by a four-jawed chuck.

Les used a spindle gouge to turn a goblet shape on the tail stock side of the blank. He then turned the area below the top of the goblet to the desired captive rings diameter.

Les hollowed the inside of the goblet.

He then used a parting tool to section off the captive rings that were to be one-quarter inch in width and depth.

Les rounded the outside of the rings with a skew. He then began to remove material from the back of the ring with his homemade ring tool, gradually eliminating material to release the ring (s).

Before each ring was completed and cut away from the blank, Les sanded the outside of each ring. To sand the inside of the ring, Les taped a small piece of sandpaper around the remaining tenon from which the ring was turned.

Holding the ring while the lathe was turning enabled Les to smooth the inside of the ring. Care must be taken to hold the now freed rings gingerly to create an even and smooth inner surface.

After both captive rings were completed, Les taped the rings to the bottom of the goblet. The long and narrow stem was turned to size, sanded and finished.

Les then moved the rings away from the bottom section of the goblet and taped them to the top so the base portion of the piece could be completed.

Les demonstrated that his homemade captive ring tool, made from an annealed file and shaped appropriately with a round file could be an effective way to create captive rings of any size.





Thanks Les, for an enlightening and well prepared demonstration.



**John Kowalchuk**-segmented vessel of purpleheart, ebony, holly and yellowheart

## Show and Tell

**Bob Sesti**-walnut bowl with large flared rim, jarrah burl vessel with blackwood finial.

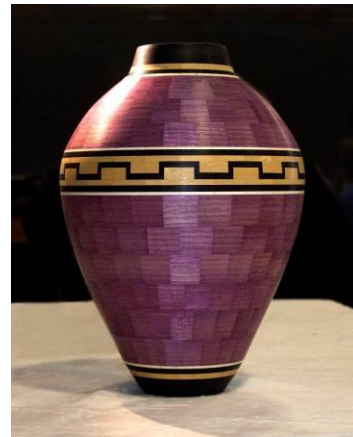


**Ken Deaner**-large walnut bowl, miniature turnings by Les H. and Ken D.

**Les Hoffman**-large bleached hollow form on black walnut pedestal, hollow form of white cedar w/flutes, black walnut vase w/stand, goblet w/captive rings

**Norm Abrams**- 2 boxes w/lids of maple burl, small quilted maple dish w/finial

**Jim Cleary**-spalted maple pepper mill, spalted maple bowl finished w/marine varnish, small maple dish w/finial



**Martin Rost**-dogwood bowl w/copper powder  
Assorted small dogwood and cherry dishes,

**Paul MacMenamin**-cherry bowl, large walnut bowl, candleholder of spalted maple, 2 small maple turnings.

**Bette Adamo**-white cedar bowl that was sandblasted and shaped with Foredom rotary tool.

Newsletters Photos by:

**Bette Adamo**  
**Bob Fentress**